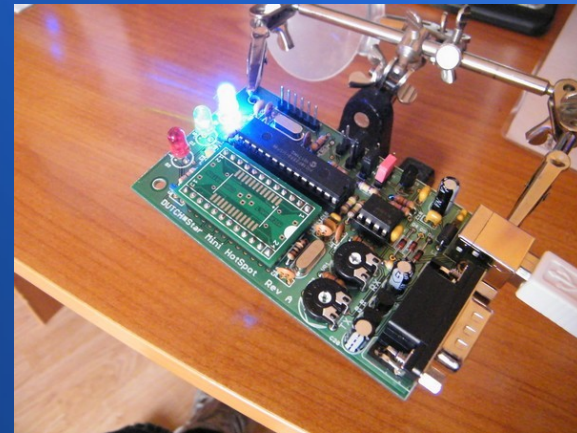


# D-Star "repeater" F8FFP



# Configuration

- Software DVAR
  - <http://www.dutch-star.eu/software/>
- HotSpot Mini HotSpot Dutch\* Star
  - <http://www.dutch-star.eu/products/mini-hs/>
- PC Alix 3D3 Mainboard, 500MHz, 256MB, 1xLAN, 2xMini-PCI,USB,VGA
  - <http://pcengines.ch/alix3d3.htm>

# Soft NAWinCFG / DVAR

## – NAWinCFG



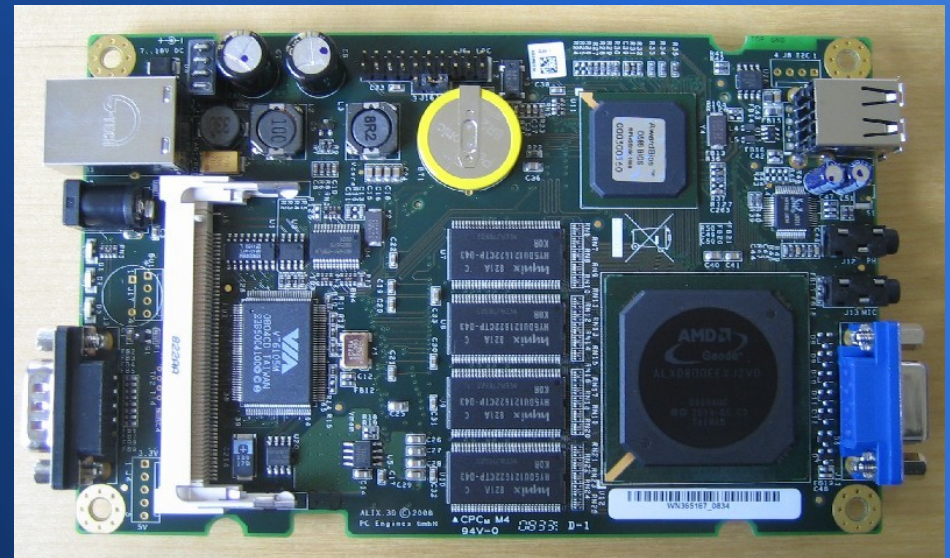
# HotSpot

- Mini HotSpot origine Dutch\*Star



# ALIX 3D3

- CPU: 500 MHz AMD Geode LX800
- DRAM: 256 MB DDR DRAM
- Storage: CompactFlash socket
- Power: DC jack or passive POE, min. 7V to max. 20V
- Three LEDs
- Expansion: 2 miniPCI slots, LPC bus
- Connectivity: 1 Ethernet channel (Via VT6105M 10/100)
- I/O: DB9 serial port, dual USB, VGA, audio headphone out / microphone in
- RTC battery
- Board size: 100 x 160 mm
- Firmware: Award BIOS



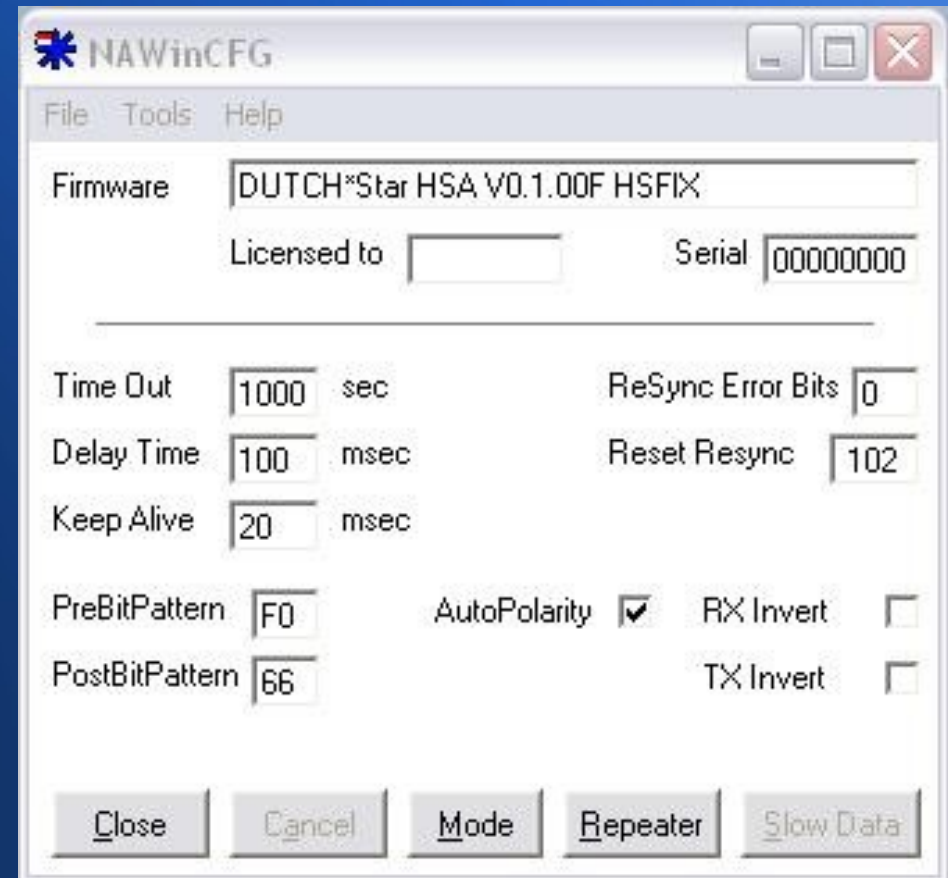
# Fichiers à télécharger :

- 1- Libusb pour Win32
  - 2- NAtools pour Windows (32-bit)
  - 3- DVAR HotSpot V2.57 (pour Windows)
- D'autres applications peuvent être ajoutées en complément voir ici <http://www.dutch-star.eu/software/>

# Suite

Après l'installation,  
lancer l'application

- NAWinCFG,  
et entrer les valeurs  
ci-contre



# NAWinCFG suite

- Configuration de la page Settings

- Call
- UR
- Rpt 1 et 2

Standalone Settings

Call Check     DUP Check     DUP Clear

Repeater Call

My Callsign   Replace

My Callsign2   Replace

Your Callsign   Replace

RPT1 Callsign   Replace

RPT2 Callsign   Replace

Flags          Replace

Mode Settings

RAW Output     SlowData Conv

CRC Check     Half Duplex

COS Check     RSSI Report

Last Frame

RSSI Squelch



# NAWinTest

- Cette application va déterminer, si l'installation ne comporte pas d'erreurs.
- ( Ci-Contre la page d'accueil ).





# 2 : Echo Test ( test audio )

- Mise en route
- Faire un test de modulation
- Votre message est enregistré et redifusé pour contrôler votre modulation.



# DVAR HotSpot

- Configuration du soft DVAR.
- Selection du repeater ou du Réflecteur.
- Et le module A,B, ou C.



# http://www.dstarusers.org/



Current Time is 04/07/2011 09:50:11 UTC [\[Click here to disable refresh\]](#)

[Home](#)

[Last Heard](#)

[JFindU D-Star Maps](#)

[Repeater Directory](#)

[D-Star Solutions](#)

[Watch D-Star Grow](#)

[Forums](#)

[Joining The Network](#)

(Updated 1/5/2010)

[Japan D-Star Repeaters](#)

[Nifty E-Z Guide to D-STAR Operation](#)

The first published book on D-Star!

Ads by Google

[Tout Jusqu'à -70%](#)  
Profitez de Remises Imbattables Toute L'Année avec Groupon France  
[www.GROUPON.fr/Offres\\_Cc](http://www.GROUPON.fr/Offres_Cc)

[Mobile Repeaters](#)  
Voted UK's #1 Mobile Phone Booster. 100% Guaranteed - Starting at £195!  
[www.mobilerepeater.co.uk](http://www.mobilerepeater.co.uk)

[Radio Programming](#)  
Software to program Icom and Yaesu amateur handheld and mobile radios.  
[www.rtsystemsinc.com](http://www.rtsystemsinc.com)

Callsign	Time Heard	Reporting Node	173 Unique callsigns heard in the last hour
PA3DIW	04/07/11 09:50:13 UTC	REF017 A 1.2GHz DVD	Amsterdam, The Netherlands
KF8KK H	04/07/11 09:50:10 UTC	WI00K C 2 Meters	Traverse City, MI, USA
IZ7OIX R	04/07/11 09:50:08 UTC	IR7UBA B 440 MHz	Bari, Puglia, Italy
CT4TE	04/07/11 09:50:08 UTC	REF040 B 440 MHz DVD	Lisbon, Lisbon, Portugal
PC4W	04/07/11 09:50:08 UTC	REF017 A 1.2GHz DVD	Amsterdam, The Netherlands
DB7MJ	04/07/11 09:50:07 UTC	DB0ESS C 2 Meters	Allgaeu, Bavaria - JN57DN, Germany
K5ZIA D	04/07/11 09:50:03 UTC	REF001 Dongle User DVD	Aurora, Illinois, USA
VK3AND	04/07/11 09:50:03 UTC	REF023 A 1.2GHz DVD	Adelaide, Australia
OK8ENK C	04/07/11 09:50:03 UTC	REF017 Dongle User DVD	Amsterdam, The Netherlands
DL2FDL	04/07/11 09:49:59 UTC	DB0HRF B 440 MHz	Gr.Feldberg/Frankfurt, J040FF, Germany
G4LUE	04/07/11 09:49:56 UTC	GB7YD C 2 Meters	Barnsley, UK
IW4BMA	04/07/11 09:49:55 UTC	IR4URE B 440 MHz	Reggio Emilia (RE), Italy, Italy
OK8ENK D	04/07/11 09:49:43 UTC	REF017 A 1.2GHz DVD	Amsterdam, The Netherlands
EA3DKP	04/07/11 09:49:37 UTC	EA3URE B 440 MHz	Figueres, Girona JN12LG, Spain
PE1PUK	04/07/11 09:49:33 UTC	REF028 A 1.2GHz DVD	Belgium
IW1PUE	04/07/11 09:49:28 UTC	IR1CJ C 2 Meters DVD	Torino, Piemonte, Italy
ON4AST	04/07/11 09:49:23 UTC	REF028 A 1.2GHz DVD	Belgium
KG4JJN	04/07/11 09:49:17 UTC	KI4WXS C 2 Meters	Charlotte, NC, USA
I8WYA	04/07/11 09:49:10 UTC	IR8PB C 2 Meters	Cosenza, Calabria, Italy
CU3AT	04/07/11 09:48:58 UTC	REF040 B 440 MHz DVD	Lisbon, Lisbon, Portugal
EA3CNO	04/07/11 09:48:57 UTC	ED3YAK C 2 Meters	Barcelona, Catalunya, Spain
KJ4YHL M	04/07/11 09:48:45 UTC	KI4WXS C 2 Meters	Charlotte, NC, USA
PY4HC	04/07/11 09:48:41 UTC	PY4RCR B 440 MHz	Belo Horizonte, MG, Brazil
EA8RCT	04/07/11 09:48:33 UTC	ED5ZAC Dongle User DVD	Denia, Alicante, Spain
M0FHM	04/07/11 09:48:27 UTC	GB7SY B 440 MHz	Shrewsbury, UK
VK3BA P	04/07/11 09:48:23 UTC	REF023 A 1.2GHz DVD	Adelaide, Australia
EA3CVS	04/07/11 09:48:14 UTC	ED3YAK C 2 Meters	Barcelona, Catalunya, Spain
SM3UPI	04/07/11 09:48:03 UTC	REF031 C 2 Meters DVD	Unknown
G7JAK	04/07/11 09:47:50 UTC	GB7NB B 440 MHz	Norwich, Norfolk, UK
KD8FKU	04/07/11 09:47:48 UTC	K8BIG B 440 MHz	Cincinnati, Ohio, USA
IW4CEZ	04/07/11 09:47:41 UTC	IR4UBP B 440 MHz	Monte Canate , Pellegrino Parmense (PR), Italy
CT2KEV	04/07/11 09:47:30 UTC	CQ0DTV B 440 MHz	Torres Vedras, Varatojo Hill - IM59IC, Portugal
M0HXE	04/07/11 09:47:24 UTC	GB7OK C 2 Meters	London, UK
G7RAE	04/07/11 09:47:02 UTC	MB6EN C 2 Meters DVD	Wellingborough, Northampton, UK
KC8OSZ	04/07/11 09:46:52 UTC	K8BIG B 440 MHz	Cincinnati, Ohio, USA
ON3AND	04/07/11 09:46:51 UTC	ON0DP B 440 MHz	Boom, Antwerp, Belgium

# Configuration suite.

- Page Setting.
- Entrer le call enregistré sur un relais.
- **ATTENTION UN SEUL ENREGISTREMENT POSSIBLE**

The screenshot shows a 'Settings' window with the following configuration details:

- Node Callsign:** HB9EWF (with a dropdown menu showing 'N') **Band Module**
- Gateway Auth Callsign:** HB9EWF
- PIN:** (empty field)
- Operating Mode:**
  - Simplex Node**
    - Operate as:** Standard simplex node (dropdown menu)
    - Repeater's callsign/band module:** (empty field)
  - Repeater**
    - Require proper RPT1 to repeat transmission
    - Require proper RPT2 to gateway transmission
- Transmit Mode:**
  - Enable GMSK Node Adapter**
  - PID (hex):** 0300
  - TX Delay Time:** 100ms (dropdown menu)
- Receive Mode:**
  - GMSK Node Adapter**
  - GMSK Sound Card Decoder**
- Digital Voice Recorder Settings:**
  - Enable Logging**
  - Enable recording by default**
  - Auto delete QSO's after:** 3 days
- Slow Speed Data Port Settings:**
  - Enable slow speed output**
  - Enable slow speed input**
  - Port number:** 20003
  - Automatically Start/Stop D-PRS Interface**
  - Path:** C:\Program Files\AE5PL\DPRSIn (with a **Browse** button)
- ID Settings:**
  - TX ID every:** 5 minutes while active to meet legal requirements.
  - TX status ID after every received transmission**
- Buttons:** Save, Cancel

# MISE EN ROUTE

- Page mise en route du Soft DVAR.

Voir détails ci-contre.

REF005 et le  
Réflecteur  
“Francophone”

The screenshot shows the 'RF: HB9EWF P/SEB - DVAR Hot Spot' window. It features a menu bar with 'File', 'DVR', 'Edit', and 'Help'. The main content is divided into several sections:

- Gateway: REF005 B**: Shows 'Address: 193.119.132.159:20001' and 'Connection Status: Connected'. A red square icon is visible. A 'Disconnect' button is present.
- Buttons**: A grid of buttons for various call signs: REF005 B, HB9IAC B, HB9AR B, HB9IAC C, HB9EWF C, VE2RIQ B, VE2RIQ B, REF016 B, ONOCPS B, and VE2RTO B.
- GMSK Node Adapter**: Shows 'Status: DUTCH\*Star HSA V0.1.00F HSFIX' with a green square icon.
- Last Gateway User**: A table with columns 'MyCall', 'UrCall', 'RPT1', and 'RPT2'. The 'UrCall' column contains 'CQCQCQ'.
- Last RF User**: A table with columns 'MyCall', 'UrCall', 'RPT1', and 'RPT2'. The 'MyCall' column contains 'HB9EWF P/SEB' and the 'RPT1' and 'RPT2' columns contain 'DIRECT'. The time is '07/04/2011 11:57:28'.
- Message**: '73 de Sebastien'.
- Bottom right**: A text box containing 'SQ=0 (0)'.

# Ajouter application D-PRS

46°54.47' N 6°21.15' E, JN36EV

**Overlays** **Plan**

**aprs.fi** · F8FFP · Déconnexion

**Local Business Center Google**  
Affichez-vous sur Google Maps pour vous faire connaître. Simple!  
Ads by Google

Affiche les dernières:  
15 minutes

Suivre la station: [Effacer / Montrer tout]

F5ZCV-4, HB9EWF-P Rechercher [?]

Adresse, ville ou localisation: [Effacer] Rechercher [?]

**F5ZCV-4** 🌿  
Mise à jour: 2011-02-04 18:05:58 (23m)  
Position: 46°53.47' N 6°23.46' E

**HB9EWF-P** 🌿  
Mise à jour: 2011-02-04 18:27:46 (1m)  
Position: 46°54.47' N 6°21.15' E

2009 2010 2011

**Autres vues:**

- Information station
- Trames packet
- Trames de statuts - Balise packet
- Météo APRS/CWOP - Télémétrie
- Messages - Liste de bulletins
- Index de préfixes
- Google Earth KML [?]
- Outils d'exportation de données

**Favoris & Partage**

- Facebook
- Reddit
- Twitter
- Favoris
- Viadeo
- Messenger
- Imprimer
- Google
- Courriel
- Digg
- Myspace
- Plus d'options

Settings AddThis

idle

Retrouvez-nous sur Facebook

aprs.fi

Données cartographiques ©2011 Google, Tele Atlas - Conditions d'utilisation



# Configuration D-PRS

**Configuration**

Your Callsign:  D-STAR ID:

AutoStart  Enable Xon/Xoff

Comm Port:  Port Speed/TCP Port:

Let Client ID

Lat (dd.ddd):  (S negative)

Lon (ddd.ddd):  (W negative)

Posit Comment:

Server Validation Code:

Server (addr:port):

Login Command:

**D-PRS Interface**

File View Tools Help

```
HB9EWF-P>API92,DSTAR*:/101510h4654.41N/00621.
```

Serial Server

# RESULTAT

46°54.56' N 6°21.19' E, JN36EV

Overlays Plan

aprs.fi · F8FFP · Déconnexion

**Vehicule tracking**  
Magnetic GPS Car Tracker From £275  
www.eyetek.co.uk  
Ads by Google

Affiche les dernières:  
15 minutes

Suivre la station: [Effacer / Montrer tout]  
F5ZCV-4 Rechercher [?]

Adresse, ville ou localisation: [Effacer]  
Rechercher [?]

**Autres vues:**

- Information station
- Trames packet
- Trames de statuts - Balise packet
- Météo APRS/CWOP - Télémétrie
- Messages - Liste de bulletins
- Index de préfixes
- Google Earth KML [?]
- Outils d'exportation de données
- Préférences - Mon compte

**Information:**  
Stations APRS actuellement en mouvement  
· User guide (Nouveau!) · FAQ · Blog ·  
Groupe de discussion · Lien vers aprs.fi ·  
Sites AIS · Statut du service · Statistiques  
de la base de données · Publicité sur aprs.fi  
· Détails techniques · API · Historique des  
modifications · Modifications futurs · Droits  
et remerciements · Terms Of Service

SHARE f t e ...

idle: points updated 0, deleted 6

**HB9EWF-P** · Centrer · zoomer · info

2011-04-07 12:18:12  
[API92 via DSTAR\*,qAR,HB9EWF-N]  
démarrer poursuite · Poursuivre dans Street View

Google 50 m 100 m

Données cartographiques ©2011 Google, Tele Atlas - Conditions d'utilisation

2011

Turismo de Lisboa

Câmara Municipal de Lisboa

TURISMO DE PORTUGAL

WWW.VISITLISBOA.COM

# A Suivre :

Mise en place de ce system, mais avec  
Le nouveau system ircDDB sous Linux voyage  
Et le PC ALIX 3D3.

FIN

73's de Sébastien F8FFP/HB9EWF